



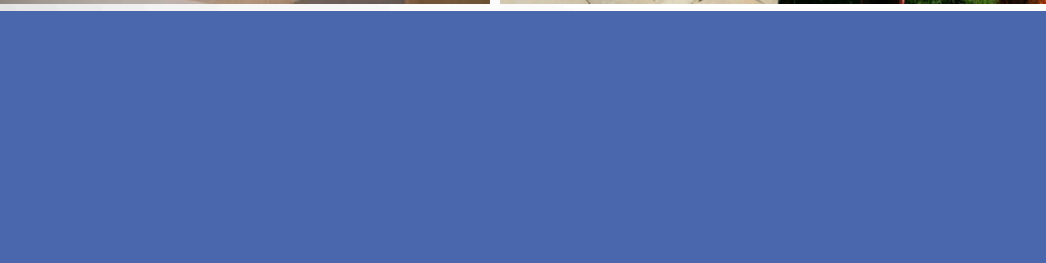
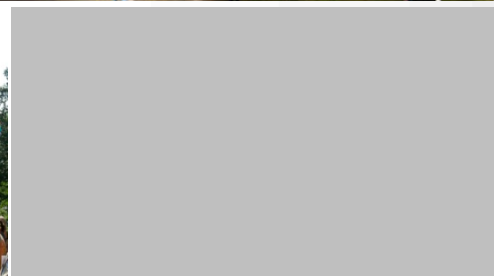
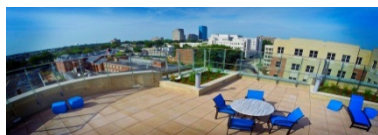
Chairman's Report

E. Britt Brockman, Chairman

September 5, 2014



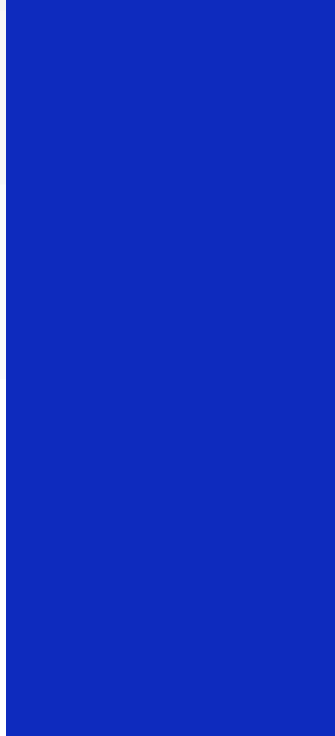
UNIVERSITY OF
KENTUCKY®
150
YEARS
1865 - 2015





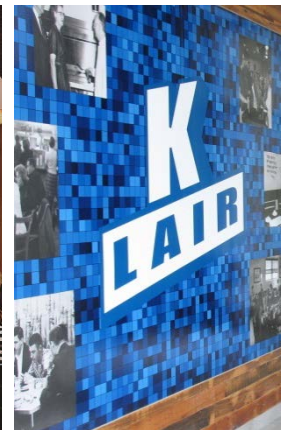
UK
UNIVERSITY OF
KENTUCKY[®] **EdR**[™]







UK.
UNIVERSITY OF
KENTUCKY®



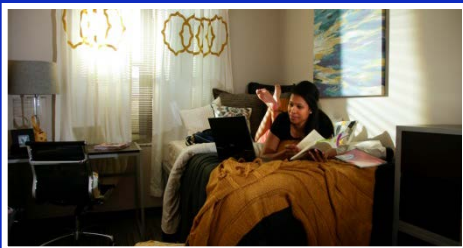
Student Support

- **\$5 million investment in enhanced safety with technology, people and initiatives to promote a safe campus culture.**
- **Expanded student services, academic advisors and the counseling center.**



Access and Affordability

- Average tuition increases are at their lowest in more than a decade.
- Increased UK funded merit and need-based financial aid by \$11 million.
- More than 85 percent of resident students this past year received aid that did not have to be repaid.
- Average out-of-pocket expenses for Kentucky students for tuition is less than \$1,200 per semester.



Presidential Evaluation

- **Positivity about the President's focus on the future, dedication to UK, and fairness and thoughtfulness.**
- **Leads with integrity and has a strong work ethic.**
- **Puts UK and its needs first.**
- **Mary Lynne is a steadfast support and vital to our success.**



Additional Feedback

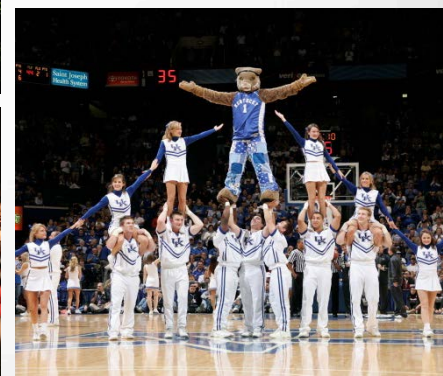
- Increase communication with all constituent groups.
- Identify the institution's next steps in the context of a new strategic plan.
- Shared governance.
- Diversity in leadership.
- Changing legal landscape confronting higher education and intercollegiate athletics.
- Involve more people in decision-making processes.



Questions to Address

- How will those changes impact our growing health care enterprise that is now central to our success?
- How will we prepare students for success after graduation and continue to help more of them graduate on time and without debt?
- How do we continue our campus revitalization efforts in a way that enhances the ability of our students to learn and our faculty and staff to continue to expand upon their work?
- How does the President communicate, articulate and implement a strategic plan – and funding model – that will guide our efforts over the next several years?







Chairman's Report

E. Britt Brockman, Chairman

September 5, 2014